



# 72-hour Emergency Preparedness Workbook

# Pet Emergency First Aid Kit

Having a first aid kit can make a difference in an emergency situation. Below is a list of items that should be included in your 72-hour survival kit. Remember to check your kit twice a year and update as needed. Always consult with your veterinarian before attempting to treat a medical condition or administering any new or different medication.

- ☐ Antibiotic ointment for wounds
- ☐ Bandage scissors
- ☐ Bandage tape
- ☐ Benadryl
- ☐ Betadine or Nolvasan skin & wound cleanser
- ☐ Contact number for 24/7 emergency veterinary services
- ☐ Cotton bandage rolls
- ☐ Cotton tipped swabs
- ☐ Elastic bandage rolls
- ☐ Eye rinse (sterile)
- ☐ Foil emergency blanket
- ☐ Hydrogen peroxide
- ☐ Instant hot & cold compresses
- ☐ Isopropyl alcohol/alcohol prep pads
- ☐ Large and small gauze
- ☐ Latex gloves or non-allergenic gloves
- ☐ Medications (minimum 2-week supply)
- ☐ Non-adherent bandage pads
- ☐ Pet First Aid Guide
- ☐ Saline solution
- ☐ Sterile lubricant
- ☐ Tick Remover
- ☐ Thermometer
- ☐ Tourniquet
- ☐ Towel and washcloth
- ☐ Tweezers
- ☐ Vet wrap



# 72-hour Emergency Preparedness Kit Supply List

## Cat Supplies

- Proof of guardianship
- Identification
- Emergency contact list
- Instructions for feeding
- Instructions for medications
- First aid kit
- Food
- Water
- Medications
- 2 non-spill dishes
- Can opener & spoon
- Litter pan & litter Litter scoop
- Bedding material
- Crate (size appropriate)
- Breakaway collar or harness
- Toys
- Paper towel
- Garbage bags
- Flashlight
- Batteries
- Proper cleaning supplies
- Brush/comb
- Whistle



## Dog Supplies

- Proof of guardianship
- Identification
- Emergency contact list
- Instructions for feeding
- Instructions for medications
- First aid kit
- Food
- Water
- Medications
- 2 non-spill dishes
- Can opener & spoon
- Poop bags
- Leash
- Properly fitted collar
- Bedding material
- Crate (size appropriate)
- Toys
- Paper towel
- Garbage bags
- Flashlight
- Batteries
- Proper cleaning supplies
- Brush/comb
- Whistle
- Muzzle

## Small Animal Supplies

(guinea pigs, hamsters, mice, rats, etc.)

- Proof of guardianship
- Identification
- Emergency contact list
- Instructions for feeding
- Instructions for medications
- First aid kit
- Food
- Water
- Medications
- 2 non-spill dishes
- Bedding material
- Extra blankets
- Crate (size appropriate)
- Paper towels
- Garbage bags
- Proper cleaning supplies
- 1 water dripper
- Brush/comb
- Litter pan & litter
- Litter scoop
- Batteries
- Flashlight
- Species-specific environmental enrichment

## Rabbit Supplies

- Proof of guardianship
- Identification
- Emergency contact list
- Instructions for feeding
- Instructions for medications
- First aid kit
- Food
- Water
- Medications
- 1 non-spill dish
- 1 water dripper
- Bedding material
- Rabbit cage (size appropriate)
- Extra blankets
- Paper towel
- Garbage bags
- Flashlight
- Litter pan & litter
- Litter scoop
- Batteries
- Proper cleaning supplies
- Environmental enrichment



## Amphibian Supplies

- Proof of guardianship
- Identification on cage
- Emergency contact list
- Instructions for feeding
- Instructions for medications
- Water-tight plastic bags
- Plastic containers with small ventilation holes (for transportation)
- Paper towels
- Moss
- Container with extra water
- Water
- Food
- Battery operated heating source
- Batteries
- Escape proof container (to use during evacuation)

## Livestock/Equine Supplies

- Proof of guardianship
- Identification on halter or ear tag
- Batteries
- First aid kit
- Emergency contact list
- Heavy gloves
- Instructions for feeding
- Instructions for medications
- Feed
- Water
- Knife
- Water and feed buckets
- Grooming brushes
- Fly spray
- Cotton halter
- Duct tape
- Rope or lariat
- Radio (solar or battery operated)
- Portable livestock panels
- Wire cutters
- Plastic trash can with lid
- Trash bags
- Nose leads
- Maps
- Shovel
- Paper towels



## Reptile Supplies

- Proof of guardianship
- Identification on cage
- Emergency contact list
- Instructions for feeding
- Instructions for medications
- First aid kit
- Food
- Water
- Dietary supplements
- Water bowl for soaking
- Spray bottle for misting
- Garbage bags
- Newspaper or paper
- Reptile-friendly non-toxic litter
- Battery operated heating source
- Handling gloves
- Escape-proof housing
- Container
- Pillow case (or small transport carrier)
- Cleaning supplies
- Paper towel
- Garbage bags
- Flashlight
- Material to cover bottom of cage
- Spray bottle or other cooling method in hot weather
- Covered carrier for transportation
- Species-specific environmental enrichment

## Bird Supplies

- Proof of guardianship
- Identification on cage
- Emergency contact list
- Instructions for feeding
- Bedding material
- Food bowls
- Water container
- Cage cleaning supplies
- Toys
- Flashlight
- First aid kit
- Food
- Water
- Grit
- Medications
- Cage (size appropriate)
- Batteries
- Paper towel
- Garbage bags
- Extra cage perches
- Hot water bottles
- Towels
- Material for bottom of cage



## Emergency Pet Contact List

In the case of an emergency, here is contact information for the animal(s) in my home.

Your Name: \_\_\_\_\_

\_\_\_\_\_

Pet(s) breed/identification: \_\_\_\_\_

\_\_\_\_\_

Pet's Name(s): \_\_\_\_\_

\_\_\_\_\_

Address: \_\_\_\_\_

\_\_\_\_\_

Phone number: \_\_\_\_\_

\_\_\_\_\_

Email address: \_\_\_\_\_

\_\_\_\_\_

Pet emergency contact: \_\_\_\_\_

\_\_\_\_\_

Your pet's veterinarian: \_\_\_\_\_

\_\_\_\_\_

Instructions for feeding: \_\_\_\_\_

\_\_\_\_\_

Additional notes: \_\_\_\_\_

\_\_\_\_\_

\_\_\_\_\_

\_\_\_\_\_

\_\_\_\_\_

\_\_\_\_\_



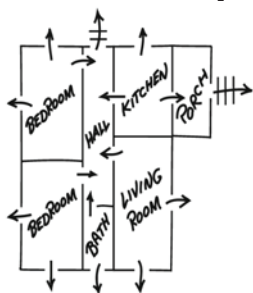
# Develop a home fire escape plan today...

## It could save your life tonight!

*Fire and smoke move quickly. Every second counts when you are trying to escape a fire. Everyone must know what to do and where to go when the smoke alarms sound. Take a few minutes with everyone in your home to make a home fire escape plan, following the instructions below.*



### 1. Draw a floor plan of your home



Use the grid on the back to draw a floor plan of your home. You should draw a plan for each storey of your home.

### 2. Include all possible emergency exits

Draw in all the doors, windows and stairways. This will show you and your family all possible escape routes at a glance. Include any features, such as the roof of a garage or porch, that would help in your escape.

### 3. Show two ways out of every room, if possible.

The door will be the main exit from each room. However, if the door is blocked by smoke or fire, identify an alternate escape route, which could be a window. Make sure that all windows can open easily and that everyone knows how to escape through them to safety. If windows have security bars, equip them with quick-releasing devices.

### 4. Does anyone need help to escape?

Decide in advance who will assist the very young, older adults or people with disabilities in your household. A few minutes of planning will save valuable seconds in a real emergency.

### 5. Choose a meeting place outside

Choose a meeting place a safe distance from your home that everyone will remember. A tree, street light or a neighbour's home are all good choices. In case of fire, everyone will go directly to this meeting place so they can be accounted for.

### 6. Call the fire department from outside your home

Don't waste valuable seconds calling the fire department from inside your home. Once you have safely escaped, call the fire department from a cell phone or a neighbour's home.

### 7. Practice your escape

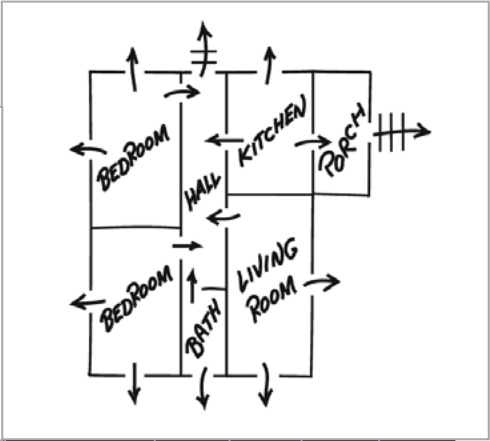
Review the plan with everyone in your household. Walk through the escape routes for each room with the entire family. Use this walk-through exercise to check your escape routes, making sure all exits are practical and easy to use. Then hold a fire drill twice a year and time how long it takes. In a real fire, you must react without hesitation as your escape routes may be quickly blocked by smoke or flames.

### Remember:

- **Plan two ways out of every room, if possible**
- **Hold a fire drill twice a year**
- **Install smoke alarms on every storey of your home and outside all sleeping areas**

*If you live in a high-rise apartment building, contact the building management for information on what to do if there's a fire in your building.*

**Draw a floor plan of your home, showing two ways out of every room, if possible.**

[illegible]